

Madison Manor

FABRICS BY JO MORTON

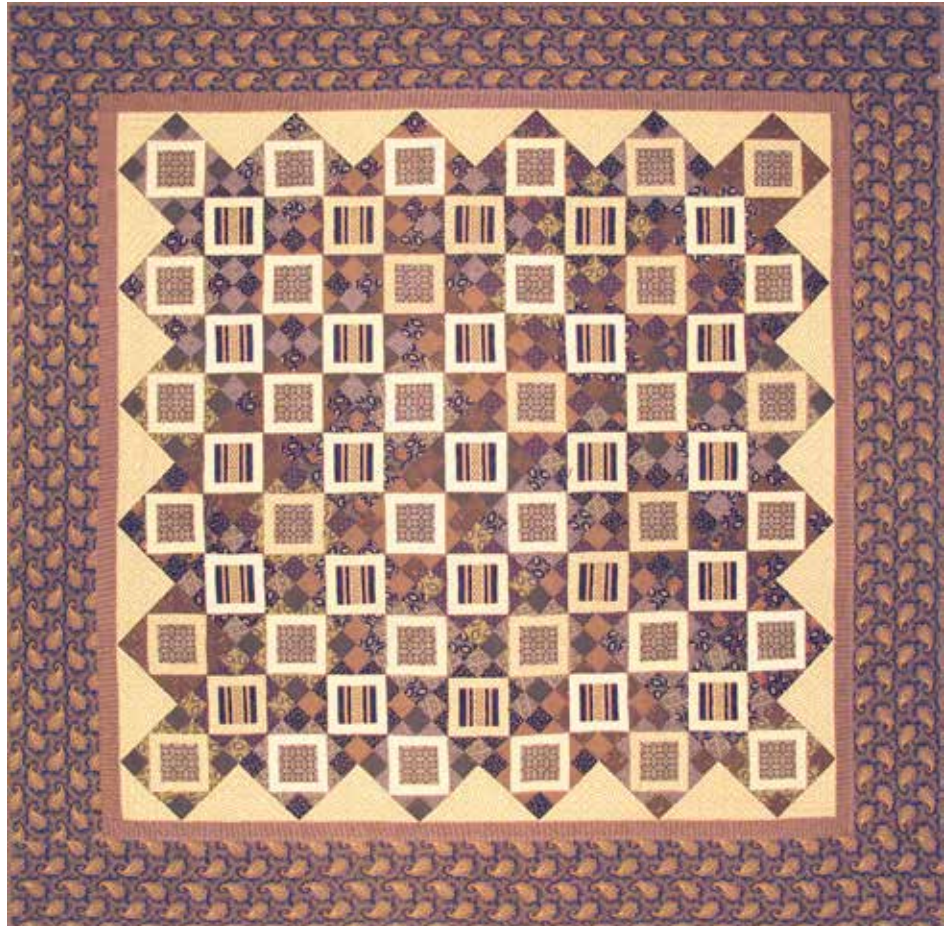


Warm Wishes Quilt
Designed and made by:
Candy Hargrove

Quilted by: **Maggi Honeyman**

Quilt Size: 67" x 67"

andoverfabrics.com



About Madison Manor

I'm always looking for medium to large beautiful designs. I found the beautiful paisley design (mother print) and was fortunate to find an unusual stripe to accompany it. I always seem to be able to find companions to "go with." The red/green colorway is perfect for the holidays and I also wanted to do a neutral second colorway for a change. I love the results and having fun sewing with it! — *Jo Morton*

andover



makower uk
The Henley Studio

Free Pattern Download Available

1384 Broadway New York, NY 10018
Tel. (800) 223-5678 • andoverfabrics.com



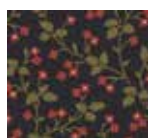
7004-G



7006-G
Fat ¼ yd



7007-GR



7008-GK



7009-G
Fat ¼ yd



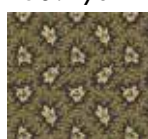
7005-GR



7010-G
Fat ¼ yd



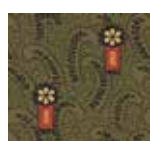
7010-GR



6028-G
Fat ¼ yd



6020-GR



6024-G
Fat ¼ yd



6028-GR



7004-K 2 yds



7006-K
Fat ¼ yd



7006-KN
Fat ¼ yd



7008-K
Fat ¼ yd



7007-KC
Fat ¼ yd



7005-K ½ yd



7009-KN
¾ yd



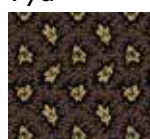
7010-KN
1 yd



6028-K
Fat ¼ yd



6020-KG
½ yd



6028-KN
Fat ¼ yd



6028-KY
Fat ¼ yd
(extra yardage
needed for backing)

FABRIC	10 KITS	20 KITS	30 KITS
6020-KG	1	1	1
7004-K	2	3	4
7005-K	1	1	1
7009-KN	1	1	2
7010-KN	1	2	2
FOR EACH	1	1	1
5687-L	5693-L	5687-N	5692-N
7009-G	6028-G	6028-K	6028-KY*
7006-G	7007-KC	6024-G	6028-KN
7006-K	7006-KN	7010-G	

BACKING

*6028-KY	4	5	10
----------	---	---	----

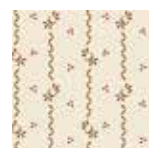
Yardage needed for backing:
4⅜ YDS per kit

Bolts needed to cut project kits.
15 yds = 1 bolt

Fabrics shown are 40% of actual size.

Fabrics used in quilt pattern are
shown in black

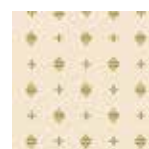
Blend with fabrics from
Sunday Best by Jo Morton



5687-N
Fat ¼ yd



5693-L
Fat ¼ yd



5692-N
Fat ¼ yd



5687-L
Fat ¼ yd

Madison Manor

FABRICS BY JO MORTON

andover : makower uk
The Henley Studio

5/9/13